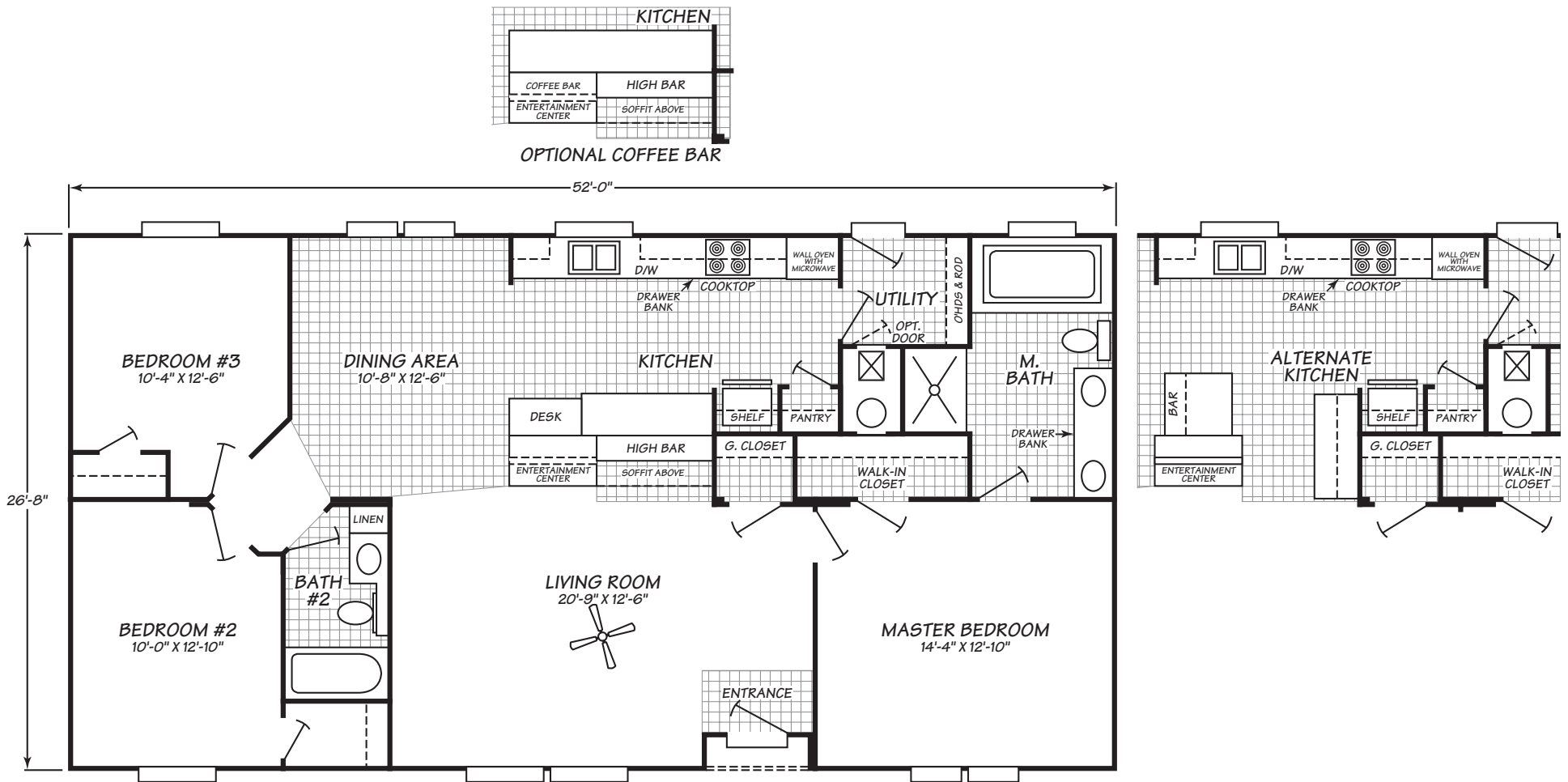


Entertainer Series Model 4523Z

3 Bedrooms • 2 Baths • 1,375 Square Feet



Fleetwood Homes reserves the right to change colors, prices, specifications, models, dimensions and materials without notice. Rendering and diagrams are meant to be representative and, in keeping with Fleetwood's policy of constant updating and improvement, may vary from the actual home. All dimensions are nominal and approximated. Square footage is measured from exterior wall to exterior wall, and is an approximate figure. Length indicated in floorplans is floor length only. The length of the hitch is not included. (Add four feet to arrive at transportable length.) Ask your retailer for specifics. PRICES AND SPECIFICATIONS SUBJECT TO CHANGE WITHOUT NOTICE OR OBLIGATION.

Interior

Cathedral Ceiling with "Orange Peel" Texture Create a light, open feeling

Tape & Texture with Painted Walls Finished, textured drywall enhances home appearance-choose from range of paint colors

Painted Accent Walls - One Wall in Master Bedroom & One Wall with Painted Wainscote and Chair Rail in Dining Room Provides distinctive & stylish decorator look

White Interior Doors with White Trim Reflects popular choice in today's homes

16 oz High Performance, 100% Nylon Carpet Long-wearing performance carpet in a wide variety of color choices

Vinyl Entry Way Easy to care for, durable vinyl stands up to wear in this high traffic area and protects carpets

Wire Shelves in Closet Practical for your storage needs

Vinyl Mini Blinds Tasteful look provides ability to adjust light and privacy

Cabinet Matched Valance Boxes in Living Room, Master Bedroom/Bath, Kitchen and Dining Coordinated custom design showcases windows

Media Center with 42" Flat Screen LCD TV

Exterior

2X6" Exterior Wall Frames, 16" on Center Additional structural strength while providing an increased R value of R19

3/12 Roof Pitch (Additional Roof Loads and 4/12 Pitch Available Per Plan) Provides the option to customize your roof load requirements and the look of your home

5/8" Floor Decking Structurally strong, warp resistant flooring is glued and fastened for maximum stability

Integrated Dormer(S) (Per Model) Adds a custom home detail

6" Eaves on Front and Rear Side and 12" Eaves on End Walls (Multi-Section Homes) Increased weather protection for your home's exterior

36X80" "Radiant Hues" Steel In-Swing Front Door with Deadbolt Durable, attractive front entry provides secure access

32X80" 9-Lite Steel in-Swing Rear Door with Deadbolt Durable, attractive entry provides additional security and more natural light

4" Trim on All Doors and Windows Add custom details to enhance home appeal

Foundation Ready Makes installation easy and hassle free

Bath

72" Rectangular Acrylic Bathtub and 1 Pc. 48" Fiberglass Walk-in Shower in Master Bath Creates "glamour bath" with spacious, custom home style bathtub and shower

1 Pc. 60" Fiberglass Tub/Shower in Guest Bath Durable, attractive and easy to clean

36" High Countertops in Master Bathroom Designed for convenience and comfort

Tile Backsplash For Vanity Ceramic tile backsplash protects surfaces and adds designer details

China Sinks with Single Lever Faucets (Double Sinks in Master Bath) Durable and attractive with superior performance and ease of control

Hollywood Light Fixture Above Vanity in Master Bath and Guest Bath Flattering light source illuminates vanity mirror

Large Mirrors Above Sinks Designer home detail offers head to toe reflections

Banjo Countertop in Guest Baths Space-saving countertop design, ideal for health & beauty products

Exhaust Fan Circulates air and reduces moisture

Toe Kick Registers Installed in convenient locations

Kitchen

Black Appliances by Whirlpool® including 18 Cu. Ft. Refrigerator, Smooth-top or Gas Cooktop, Built-in Wall Oven, Built-in Microwave Oven & Dishwasher Quality brand name appliances in a stylish finish

Hardwood Raised Panel Cabinet Doors Long-lasting and beautiful, enriches the appearance of kitchen cabinets

Cityscape Cabinets with Crown Molding Spacious, durable, and appealing design with a custom kitchen style

Lined Overhead Cabinets with Adjustable Shelves More aesthetically pleasing and adjustable shelf creates additional cabinet space

Pot and Pan Drawer Under Cooktop Provides spacious and convenient storage

Tile backsplash and Tile Behind Range with a Decorative Insert Ceramic tile backsplash protects surfaces and adds designer details

7" Stainless Steel Double Sink Contemporary look, resists chips and stains

Single Lever Faucet with Pull-Out Sprayer Refined single lever faucet fixtures are attractive and easier to use

Recessed Can Lighting Designer detail enhances kitchen lighting

Utilities, Safety & Energy

Electric Furnace (Gas Furnace Optional) Provides worry free and efficient heating supply for your home

40 Gallon Electric Water Heater (50 Gallon Electric or Gas Optional) Abundant hot water supply for laundry, bath, and kitchen

200 Amp Electrical Panel Box Designed and installed for safety, easy access and ample household capacity

Dual Pane Low-E Vinyl Windows Easy to clean, and low maintenance helps provide an energy efficient home

R-28 Roof Insulation, R-19 Wall Insulation, R-22 Floor Insulation Roof, exterior wall, and under-home insulation keeps home comfortable and helps lower utility bills

Two Overhead Cabinets and Rod Over Washer and Dryer Provides extra storage and helps organize laundry supplies

Whole House Shut-Off Valves Quickly shut off water and gas for repairs or in an emergency

Smoke Detectors with Battery Back-Up Protect every resident from fire danger and potentially get lower insurance rates

Whole House Ventilation System Reduces moisture and improves air flow

Exterior Hose Bib Convenient water access for outdoor needs

Options

Energy Star Insulation Package Energy star maximizes heating, cooling, and power savings through energy efficiency

Solid-Surface Countertop Designer kitchen upgrade adds long lasting, durable beauty

Laminate Flooring Upgrade Tough, long-wearing laminate flooring available in appealing designer colors

Deluxe Carpet Upgrade by Shaw® Luxurious, heavier weight carpet in designer colors