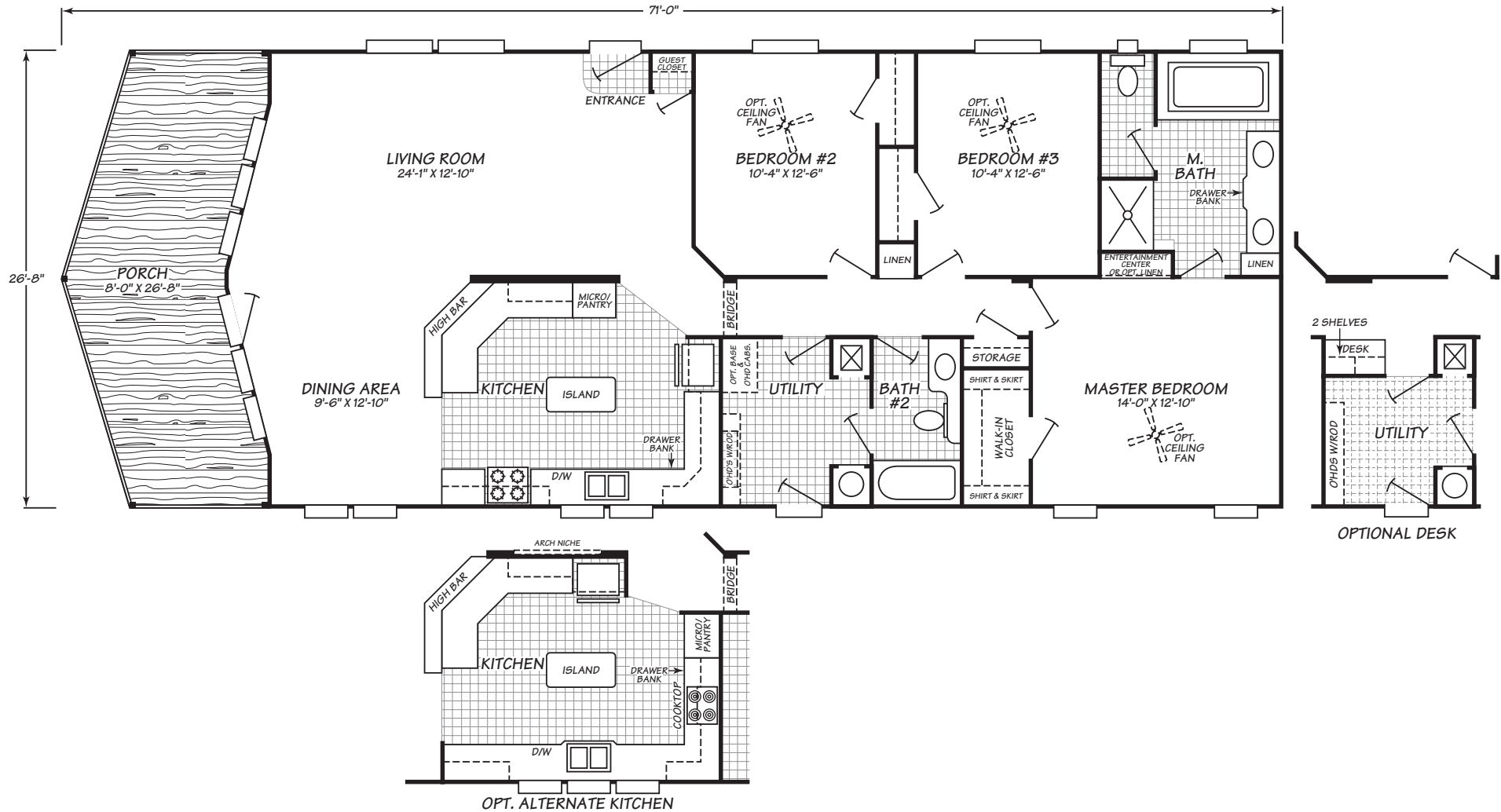


# Riverknoll Series Model 4713P

3 Bedrooms • 2 Baths • 1,601 Square Feet



Fleetwood Homes reserves the right to change colors, prices, specifications, models, dimensions and materials without notice. Rendering and diagrams are meant to be representative and, in keeping with Fleetwood's policy of constant updating and improvement, may vary from the actual home. All dimensions are nominal and approximated. Square footage is measured from exterior wall to exterior wall, and is an approximate figure. Length indicated in floorplans is floor length only. The length of the hitch is not included. (Add four feet to arrive at transportable length.) Ask your retailer for specifics. PRICES AND SPECIFICATIONS SUBJECT TO CHANGE WITHOUT NOTICE OR OBLIGATION.

**Interior**

**Tape & Texture with Painted Walls** Finished, textured drywall enhances home appearance-choose from range of paint colors

**2" Faux Wood Finish Blinds with Decorator Valance** Beautiful and stylish decorator look provides ability to adjust light and privacy

**30" Embossed Two Panel White Interior Doors with Lever Handle** Contemporary & stylish with easy to use fixtures, creates a designer home look

**24 oz. Carpet by Shaw with 6 Lb. Pad** High performance carpet in a wide variety of color choices

**Phone Jack** Convenient telephone access

**Solid Wood Shelving & Clothes Hanger Rod** Stronger shelving and more upscale closet interior

**Wood Burning Fireplace (Standard on Select Models Only)** Add warmth and beauty with a low maintenance wood fireplace (optional gas)

**Media Center with 42" Flat Screen LCD TV, DVD/VCR Player with Surround Sound** (Standard on Select Models Only)

**Exterior**

**2X6" Exterior Wall Frames, 16" on Center** Additional structural strength while providing an increased R value of R19

**3/12 Roof Pitch (4713p is 4/12) (Additional Roof Loads and 4/12 or 6/12 Pitch Available Per Plan)** Provides the option to customize your roof load requirements and the look of your home

**4713p Model Features Log Siding, A Prow Porch, 16" Eaves, and A 4/12 Roof Pitch** Popular rustic cabin look with optional standing seam metal roof

**5/8" Floor Decking** Structurally strong, warp resistant flooring is glued and fastened for maximum stability

**Craftsman Style Board and Batt in Dormer Areas** Adds a distinctive, custom designer look to home

**Integrated Dormer(S) (Per Model)** Adds a custom home detail

**6" Eaves on Front and Rear Side and 12" Eaves on End Walls (Multi-Section Homes)** Increased weather protection for your home's exterior

**36X80" in-Swing Craftsman Style 3-Lite Front Door with Deadbolt** Distinctive extra-wide entry provides durable and secure access and adds to designer look of home

**Foundation Ready** Makes installation hassle free

**Bath**

**Drop-in Acrylic Oval Bathtub and 1 Pc. 48" Fiberglass Walk-in Shower in Master Bath** Creates "glamour bath" with attractive, custom home style bathtub and shower

**1 Pc. 60" Fiberglass Tub/Shower in Guest Bath** Durable, attractive and easy to clean

**36" High Countertops in Master Bathroom** Designed for convenience and comfort

**Tile Edging & Backsplash For Vanity** Ceramic tile edging and backsplash protects surfaces and adds designer details

**China Sinks with Single Lever Faucets (Double Sinks in Master Bath)** Durable and attractive with superior performance and ease of control

**Hollywood Light Fixture Above Vanity in Master Bath and Guest Bath** Flattering light source illuminates vanity mirror

**Large Mirrors Above Sinks** Designer home detail offers head to toe reflections

**Banjo Countertop in Guest Baths** Space-saving countertop design, ideal for health & beauty products

**Elongated Toilets** Functional, attractive custom home detail

**Exhaust Fan** Circulates air and reduces moisture

**Kitchen**

**Black Appliances with 22 Cu. Ft. Satina Refrigerator by Whirlpool®** Brand name appliances in a stylish, contemporary finish

**Built-in Microwave Oven (Standard on Select Models Only)** Conveniently located and saves counter space

**Dishwasher by Whirlpool®** Save time washing dishes with a quality, brand name appliance

**Hardwood Raised Panel Cabinet Doors** Long-lasting and beautiful, enriches the appearance of kitchen cabinets

**Cityscape Cabinets with Crown Molding** Spacious, durable, and appealing design with a custom kitchen style

**Lined Overhead Cabinets with Adjustable Shelves** More aesthetically pleasing and adjustable shelf creates additional cabinet space

**Tile Edging & Backsplash** Ceramic tile edging and backsplash protects surfaces and adds designer details

**8" Stainless Steel Double Sink** Contemporary look, resists chips and stains

**Single Lever Pull-Out Sprayer Faucet** Refined single lever faucet fixtures are attractive and easier to use

**Recessed Can Lighting** Designer detail enhances kitchen lighting

**Utilities, Safety & Energy**

**Electric Furnace (Gas Furnace Optional)** Provides worry free and efficient heating supply for your home

**50 Gallon Electric Water Heater (Gas Optional)** Abundant hot water supply for laundry, bath, and kitchen

**200 Amp Electrical Panel Box** Designed and installed for safety, easy access and ample household capacity

**Dual Pane Low-E Vinyl Windows** Easy to clean, and low maintenance helps provide an energy efficient home

**R-28 Roof Insulation, R-19 Wall Insulation, R-22 Floor Insulation** Roof, exterior wall, and under-home insulation keeps home comfortable and helps lower utility bills

**Exterior Hose Bib** Convenient water access for yard care & other outdoor needs

**Two Overhead Cabinets and Rod Over Washer and Dryer** Provides extra storage and helps organize laundry supplies

**Whole House Shut-Off Valves** Quickly shut off water and gas for repairs or in an emergency

**Smoke Detectors with Battery Back-Up** Protect every resident from fire danger and potentially get lower insurance rates

**Whole House Ventilation System** Reduces moisture and improves air flow

**Options**

**Energy Star Insulation Package** Energy star maximizes heating, cooling, and power savings through energy efficiency

**Whirlpool® Stainless Steel Appliance Package** Adds a designer look with reliable, brand name appliances

**Solid-Surface Countertop** Designer kitchen upgrade adds long lasting, durable beauty

**Laminate Flooring Upgrade** Tough, long-wearing laminate flooring available in appealing designer colors

**Deluxe Carpet Upgrade by Shaw®** Luxurious, heavier weight carpet in designer colors

Fleetwood Homes reserves the right to change colors, prices, specifications, models, dimensions and materials without notice. Rendering and diagrams are meant to be representative and, in keeping with Fleetwood's policy of constant updating and improvement, may vary from the actual home. All dimensions are nominal and approximated. Square footage is measured from exterior wall to exterior wall, and is an approximate figure. Length indicated in floorplans is floor length only. The length of the hitch is not included. (Add four feet to arrive at transportable length.) Ask your retailer for specifics. PRICES AND SPECIFICATIONS SUBJECT TO CHANGE WITHOUT NOTICE OR OBLIGATION.