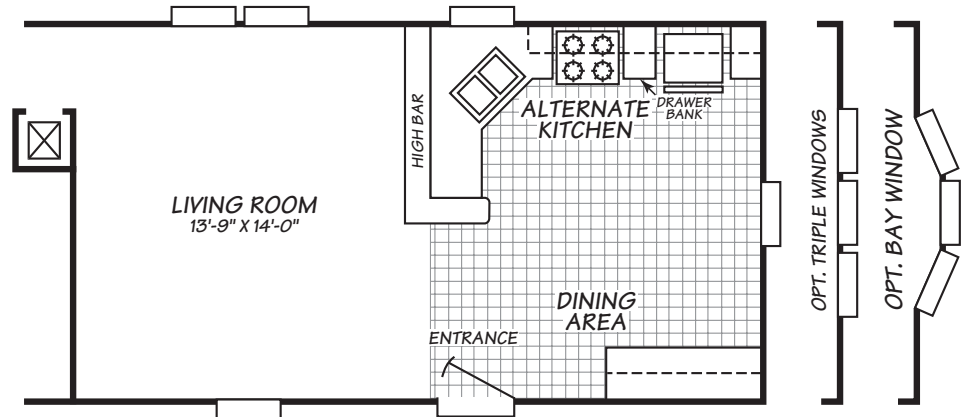
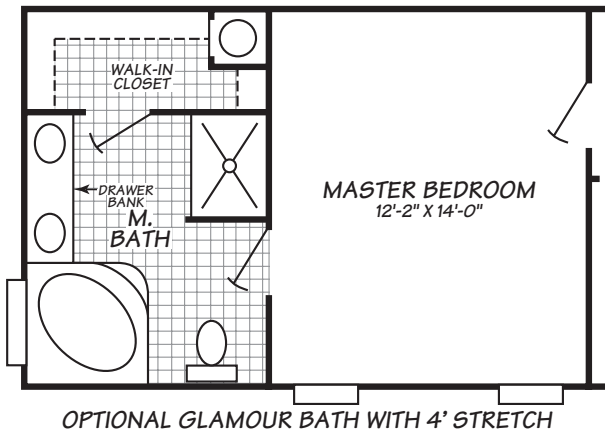
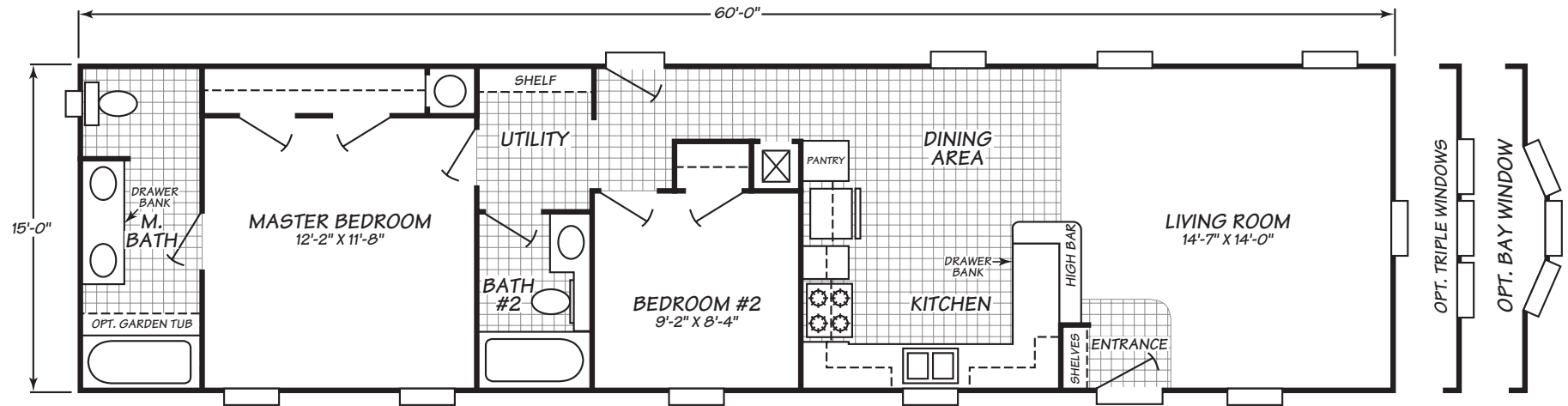


Timberlake Series Model 6602L

2 Bedrooms • 2 Baths • 900 Square Feet



Fleetwood Homes reserves the right to change colors, prices, specifications, models, dimensions and materials without notice. Rendering and diagrams are meant to be representative and, in keeping with Fleetwood's policy of constant updating and improvement, may vary from the actual home. All dimensions are nominal and approximated. Square footage is measured from exterior wall to exterior wall, and is an approximate figure. Length indicated in floorplans is floor length only. The length of the hitch is not included. (Add four feet to arrive at transportable length.) Ask your retailer for specifics. PRICES AND SPECIFICATIONS SUBJECT TO CHANGE WITHOUT NOTICE OR OBLIGATION.

Interior

Cathedral Ceiling with "Orange Peel" Texture Create a light, open feeling

Tape & Texture with Painted Walls Finished, textured drywall enhances home appearance-choose from range of paint colors

White Interior Doors with White Trim Reflects popular choice in today's homes

16 oz High Performance, 100% Nylon Carpet Long-wearing performance carpet in a wide variety of color choices

Vinyl Mini Blinds with Decorative Window Valance Tasteful decorator look provides ability to adjust light and privacy

Vinyl Entry Way Easy to care for, durable vinyl stands up to wear in this high traffic area and protects carpets

Solid Wood Shelving & Clothes Hanger Rod Stronger shelving and more upscale closet interior

Exterior

2X6" Exterior Wall Frames, 16" on Center Additional structural strength while providing an increased R value of R19

3/12 Roof Pitch (Additional Roof Loads and 4/12 or 6/12 Pitch Available Per Plan) Provides the option to customize your roof load requirements and the look of your home

5/8" Floor Decking Structurally strong, warp resistant flooring is glued and fastened for maximum stability

Integrated Dormer(S) (Per Model) Adds a custom home detail

6" Eaves on Front and Rear Side and 12" Eaves on End Walls (Multi-Section Homes) Increased weather protection for your home's exterior

36X80" Steel in-Swing Front Door with Deadbolt Extra-wide entryway for secure and improved access

32X80" 9-Lite Steel in-Swing Rear Door with Deadbolt Durable, attractive entry provides additional security and more natural light

4" Trim on All Doors and Windows Add custom details to enhance home appeal

Foundation Ready Makes installation hassle free

Bath

60" ABS Tub/Shower in Master and Guest Bath Durable, attractive, and easy to clean

Plastic Sink with Dual Handle Plastic Faucets Durable and fashionable fixtures

Dual Handle Plastic Tub/Shower Diverter Attractive and functional designer detail

36" High Countertops in Master Bathroom Designed for convenience and comfort

Tile Backsplash For Vanity Ceramic tile backsplash protects surfaces and adds designer details

Hollywood Light Fixture Above Vanity in Master Bath Flattering light source illuminates vanity mirror

Large Mirrors Above Sinks Designer home detail offers head to toe reflections

Banjo Countertop in Guest Baths Space-saving countertop design, ideal for health & beauty products

Towel Bar & Tissue Holders Ready to move in with the convenience of towel and tissue placements

Exhaust Fan Circulates air and reduces moisture

Kitchen

Whirlpool® 30" Free-Standing Electric or Gas Range and 18 Cu. Ft. Frost Free Refrigerator Provides quality name brand confidence and hassle-free service

MDF Picture Frame Cabinet Doors Attractive detail complements your kitchen design

Kitchen Cabinet Crown Molding Generous crown moldings enhance cabinets

Cityscape Cabinets Spacious, durable, and appealing design with a custom kitchen style

30" Overhead Cabinets Lined cabinets are easier to clean and storage ready

Drawer Bank with Large Bottom Drawer Efficient design enhances storage

Tile Backsplash Ceramic tile backsplash protects surfaces and adds designer details

7" Stainless Steel Double Sink Contemporary look, resists chips and stains

Single Lever Faucet with Pull-Out Sprayer Refined single lever faucet fixtures are attractive and easier to use

Three Arm Chandelier in Dining Room An elegant chandelier adds a dramatic lighting detail

Utilities, Safety & Energy

Electric Furnace (Gas Furnace Optional) Provides worry free and efficient heating supply for your home

40 Gallon Electric Water Heater (50 Gallon Electric or Gas Optional) Abundant hot water supply for laundry, bath, and kitchen

200 Amp Electrical Panel Box Designed and installed for safety, easy access and ample household capacity

Dual Pane Low-E Vinyl Windows Easy to clean, and low maintenance helps provide an energy efficient home

R-28 Roof Insulation, R-19 Wall Insulation, R-22 Floor Insulation Roof, exterior wall, and under-home insulation keeps home comfortable and helps lower utility bills

Exterior Hose Bib Convenient water access for yard care & other outdoor needs

Whole House Shut-Off Valves Quickly shut off water and gas for repairs or in an emergency

Smoke Detectors with Battery Back-Up Protect every resident from fire danger and potentially get lower insurance rates

Whole House Ventilation System Reduces moisture and improves air flow

Wood Shelf Over Washer and Dryer Provides extra storage and helps organize laundry supplies

Options

Energy Star Insulation Package Energy star maximizes heating, cooling, and power savings through energy efficiency

Appliance Option Package by Whirlpool® Add or upgrade brand name appliances to suit any taste

Whirlpool® Stainless Steel Appliance Package Adds a designer look with reliable, brand name appliances

Solid-Surface Countertop Designer kitchen upgrade adds long lasting, durable beauty

Laminate Flooring Upgrade Tough, long-wearing laminate flooring available in appealing designer colors

Deluxe Carpet Upgrade by Shaw® Luxurious, heavier weight carpet in designer colors

Dishwasher by Whirlpool® and/or Garbage Disposal Helps with easy kitchen clean-up

Single Lever Faucets and Tub/Shower Diverter Throughout Home Superior performance and ease of control