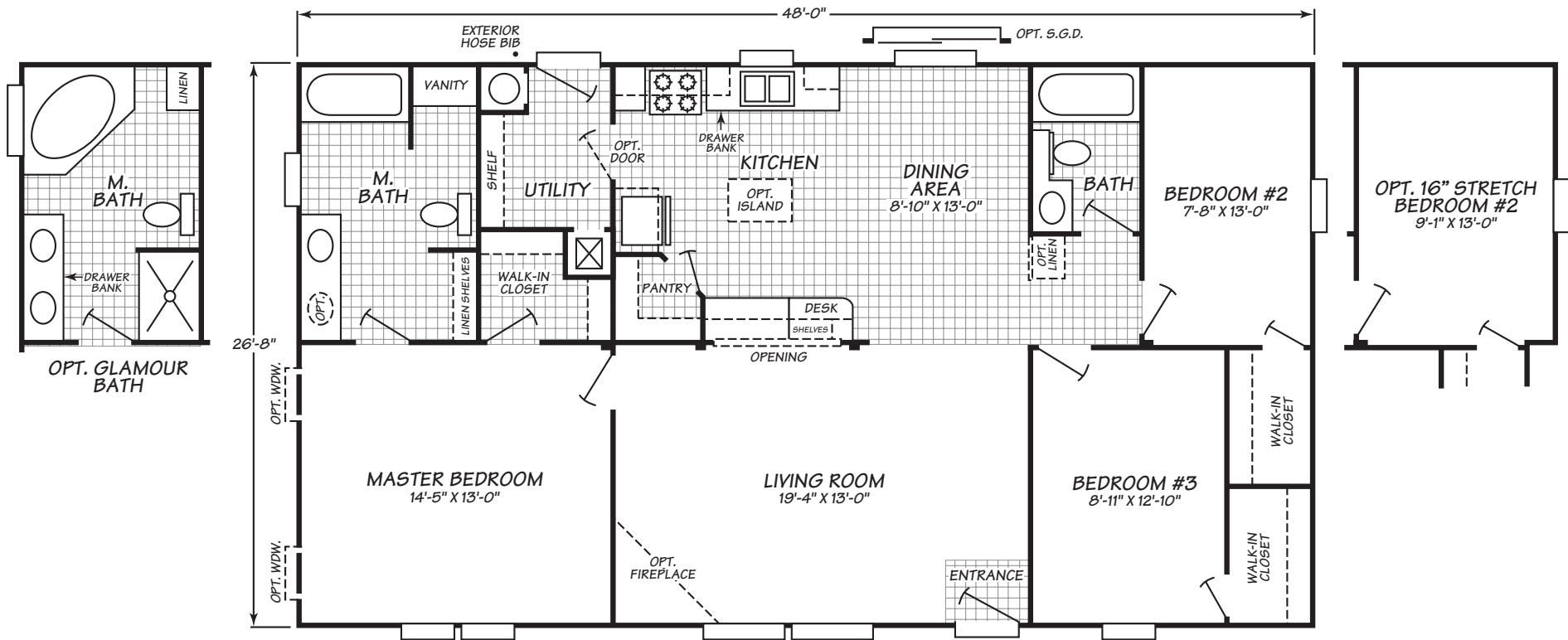




Timberlake Series Model 4483B

3 Bedrooms • 2 Baths • 1,279 Square Feet



Fleetwood Homes reserves the right to change colors, prices, specifications, models, dimensions and materials without notice. Rendering and diagrams are meant to be representative and, in keeping with Fleetwood's policy of constant updating and improvement, may vary from the actual home. All dimensions are nominal and approximated. Square footage is measured from exterior wall to exterior wall, and is an approximate figure. Length indicated in floorplans is floor length only. The length of the hitch is not included. (Add four feet to arrive at transportable length.) Ask your retailer for specifics. PRICES AND SPECIFICATIONS SUBJECT TO CHANGE WITHOUT NOTICE OR OBLIGATION.

Interior	Exterior	Bath	Kitchen	Utilities, Safety & Energy	Options
<p>Cathedral Ceiling with "Orange Peel" Texture Create a light, open feeling</p>	<p>2X6" Exterior Wall Frames, 16" on Center Additional structural strength while providing an increased R value of R19</p>	<p>60" Abs Tub/Shower in Master and Guest Bath Durable, attractive, and easy to clean</p>	<p>Whirlpool® 30" Free-Standing Electric or Gas Range and 18 Cu. Ft. Frost Free Refrigerator Provides quality name brand confidence and hassle-free service</p>	<p>Electric Furnace (Gas Furnace Optional) Provides worry free and efficient heating supply for your home</p>	<p>Energy Star Insulation Package Energy star maximizes heating, cooling, and power savings through energy efficiency</p>
<p>Tape & Texture with Painted Walls in Living Room, Dining Room, Hallway, and Master Bedroom (Optional Throughout Home) Finished, textured drywall enhances home appearance-choose from wide range of paint colors</p>	<p>3/12 Roof Pitch (Additional Roof Loads and 4/12 or 6/12 Pitch Available Per Plan) Provides the option to customize your roof load requirements and the look of your home</p>	<p>Dual Handle Plastic Tub/Shower Diverter Attractive and functional designer detail</p>	<p>MDF Picture Frame Cabinet Doors Attractive detail complements your kitchen design</p>	<p>40 Gallon Electric Water Heater (50 Gallon Electric or Gas Optional) Abundant hot water supply for laundry, bath, and kitchen</p>	<p>Appliance Option Package by Whirlpool® Add or upgrade brand name appliances to suit any taste</p>
<p>Decorative Gypsum Wall Panels in Kitchen, Utility, Baths, and Secondary Bedrooms Enhance your decor with choice of designer looks</p>	<p>5/8" Floor Decking Structurally strong, warp resistant flooring is glued and fastened for maximum stability</p>	<p>36" High Countertops in Master Bathroom Designed for convenience and comfort</p>	<p>Kitchen Cabinet Crown Molding Generous crown moldings enhance cabinets</p>	<p>200 Amp Electrical Panel Box Designed and installed for safety, easy access and ample household capacity</p>	<p>Whirlpool® Stainless Steel Appliance Package Adds a designer look with reliable, brand name appliances</p>
<p>White Interior Doors with White Trim Reflects popular choice in today's homes</p>	<p>Cempanel® Vertical Siding Durable, low maintenance, and trusted brand</p>	<p>Tile Backsplash For Vanity Ceramic tile backsplash protects surfaces and adds designer details</p>	<p>Cityscape Cabinets Spacious, durable, and appealing design with a custom kitchen style</p>	<p>Dual Pane Low-E Vinyl Windows Easy to clean, and low maintenance helps provide an energy efficient home</p>	<p>Solid-Surface Countertop Designer kitchen upgrade adds long lasting, durable beauty</p>
<p>16 oz High Performance, 100% Nylon Carpet Long-wearing performance carpet in a wide variety of color choices</p>	<p>Integrated Dormer(S) (Per Model) Adds a custom home detail</p>	<p>Hollywood Light Fixture Above Vanity in Master Bath Flattering light source illuminates vanity mirror</p>	<p>30" Overhead Cabinets Lined cabinets are easier to clean and storage ready</p>	<p>R-28 Roof Insulation, R-19 Wall Insulation, R-22 Floor Insulation Roof, exterior wall, and under-home insulation keeps home comfortable and helps lower utility bills</p>	<p>Laminate Flooring Upgrade Tough, long-wearing laminate flooring available in appealing designer colors</p>
<p>Vinyl Mini Blinds with Decorative Window Valance Tasteful decorator look provides ability to adjust light and privacy</p>	<p>6" Eaves on Front and Rear Side and 12" Eaves on End Walls (Multi-Section Homes) Increased weather protection for your home's exterior</p>	<p>Large Mirrors Above Sinks Designer home detail offers head to toe reflections</p>	<p>Drawer Bank with Large Bottom Drawer Efficient design enhances storage</p>	<p>Exterior Hose Bib Convenient water access for yard care & other outdoor needs</p>	<p>Deluxe Carpet Upgrade by Shaw® Luxurious, heavier weight carpet in designer colors</p>
<p>Vinyl Tile Entry Way Easy to care for, durable vinyl stands up to wear in this high traffic area and protects carpets</p>	<p>36X80" Steel in-Swing Front Door with Deadbolt Extra-wide entryway for secure and improved access</p>	<p>Banjo Countertop in Guest Baths Space-saving countertop design, ideal for health & beauty products</p>	<p>Tile Backsplash Ceramic tile backsplash protects surfaces and adds designer details</p>	<p>Whole House Shut-Off Valves Quickly shut off water and gas for repairs or in an emergency</p>	<p>Dishwasher by Whirlpool® and/or Garbage Disposal Helps with easy kitchen clean-up</p>
<p>Solid Wood Shelving & Clothes Hanger Rod Stronger shelving and more upscale closet interior</p>	<p>32X80" 9-Lite Steel in-Swing Rear Door with Deadbolt Durable, attractive entry provides additional security and more natural light</p>	<p>Plastic Sink with Dual Handle Plastic Faucets Durable and fashionable fixtures</p>	<p>7" Stainless Steel Double Sink Contemporary look, resists chips and stains</p>	<p>Smoke Detectors with Battery Back-Up Protect every resident from fire danger and potentially get lower insurance rates</p>	<p>Single Lever Faucets and Tub/Shower Diverters Throughout Home Superior performance and ease of control</p>
<p>4" Trim on All Doors and Windows Add custom details to enhance home appeal</p>	<p>Foundation Ready Makes installation hassle free</p>	<p>Towel Bar & Tissue Holders Ready to move in with the convenience of towel and tissue placements</p>	<p>Single Lever Faucet with Pull-Out Sprayer Refined single lever faucet fixtures are attractive and easier to use</p>	<p>Whole House Ventilation System Reduces moisture and improves air flow</p>	
		<p>Exhaust Fan Circulates air and reduces moisture</p>	<p>Three Arm Chandelier in Dining Room An elegant chandelier adds a dramatic lighting detail</p>	<p>Wood Shelf Over Washer and Dryer Provides extra storage and helps organize laundry supplies</p>	

Fleetwood Homes reserves the right to change colors, prices, specifications, models, dimensions and materials without notice. Rendering and diagrams are meant to be representative and, in keeping with Fleetwood's policy of constant updating and improvement, may vary from the actual home. All dimensions are nominal and approximated. Square footage is measured from exterior wall to exterior wall, and is an approximate figure. Length indicated in floorplans is floor length only. The length of the hitch is not included. (Add four feet to arrive at transportable length.) Ask your retailer for specifics. PRICES AND SPECIFICATIONS SUBJECT TO CHANGE WITHOUT NOTICE OR OBLIGATION.